

1ST ST. N.E. (FORMERLY BLOWERS ST)

1ST AVE. N.E.

2ND AVE. N.E.

ROSS AVE.

1ST ST. S.E. (FORMERLY MAIN ST.)

2ND AVE. S.E.

2ND ST. S.E. (FORMERLY ALEXANDER ST.)

37

38

39

SCALE 50 FT. TO ONE INCH.



191

194

195

ADDISON AVE.

RIVER AVE.



5TH ST. N.W.

5TH ST. N.E. (FORMERLY DOUGLAS ST.)

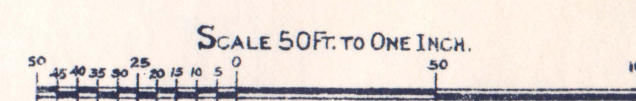
1ST AVE. N.E. (FORMERLY MCKENZIE AVE.)

GEATZ AVE.

4TH ST. N.E. (FORMERLY MCLEOD ST.)

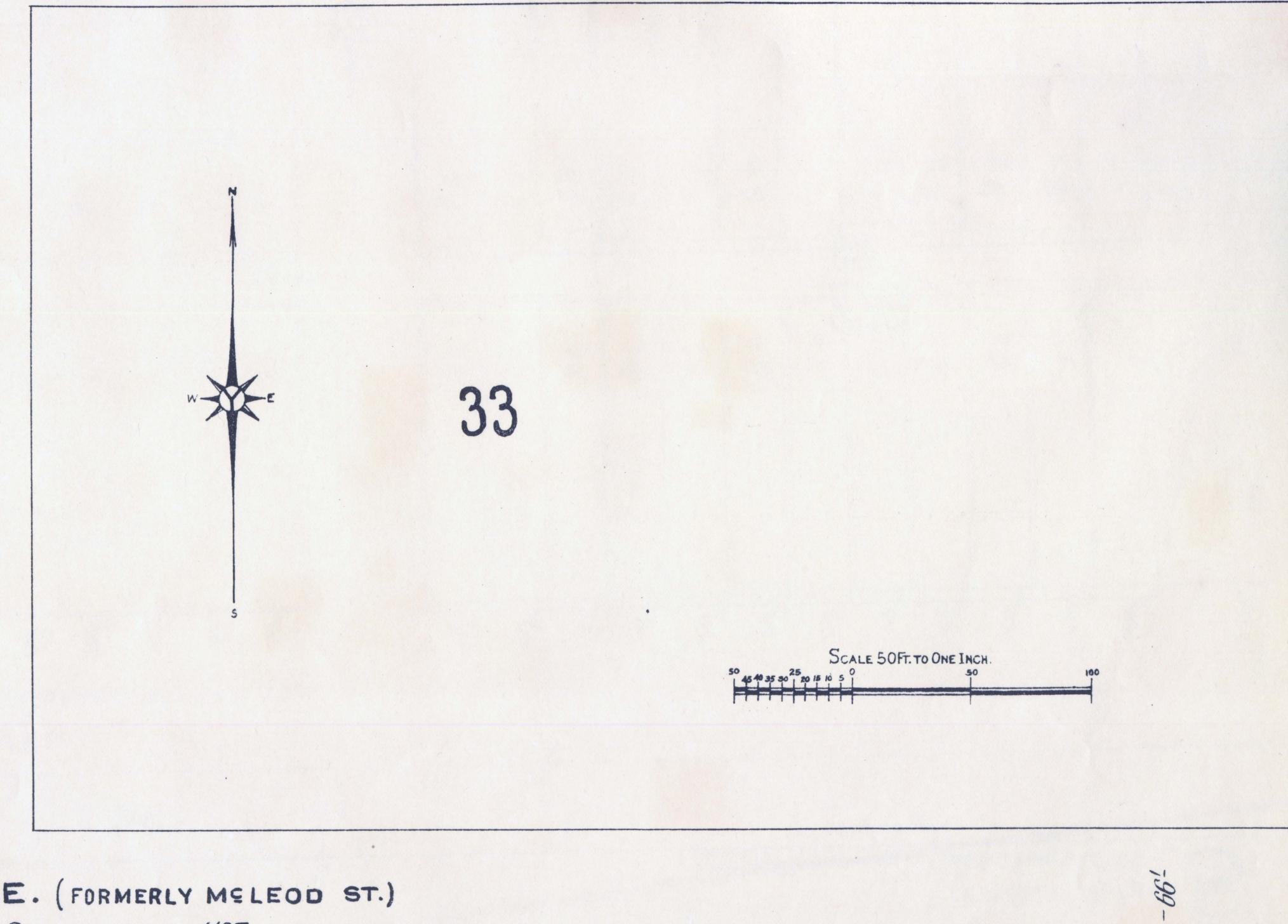
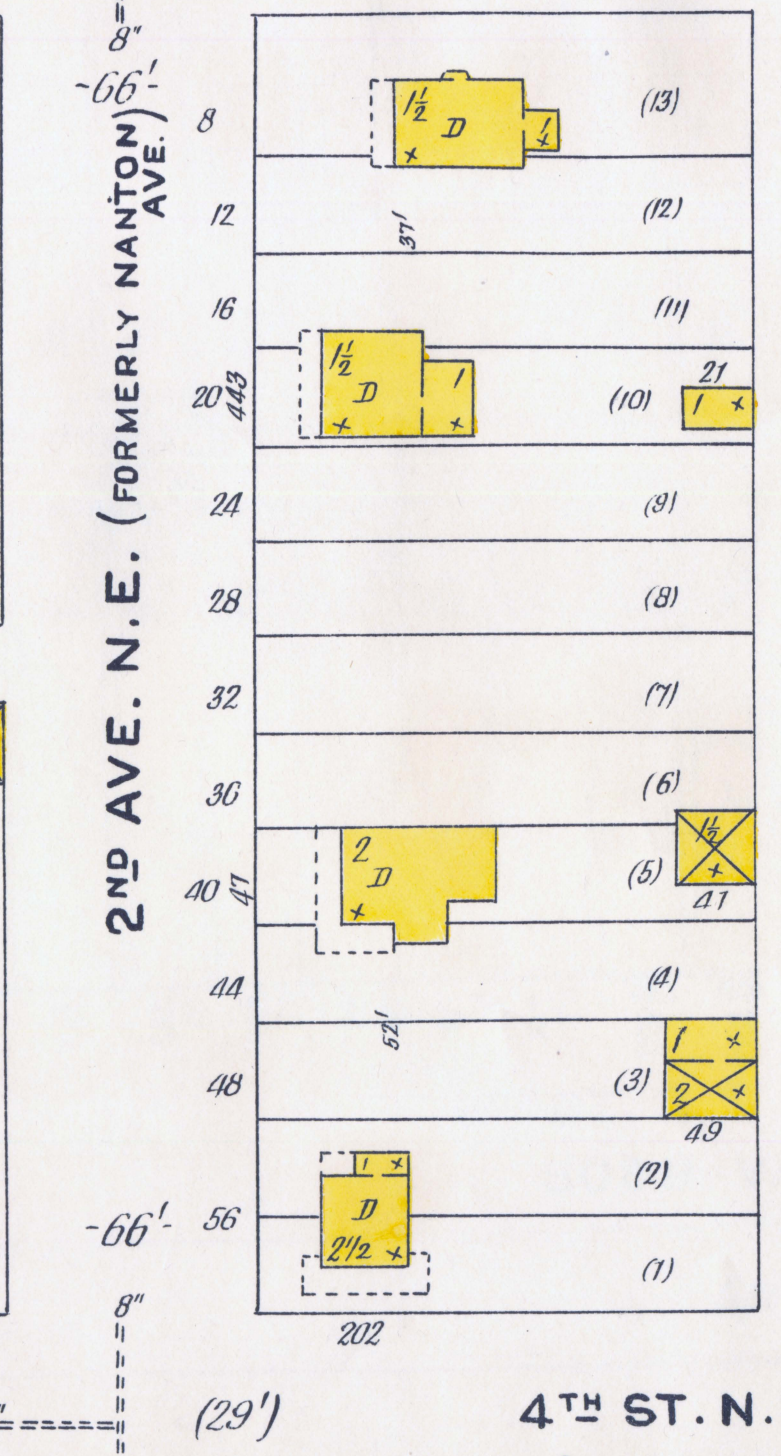
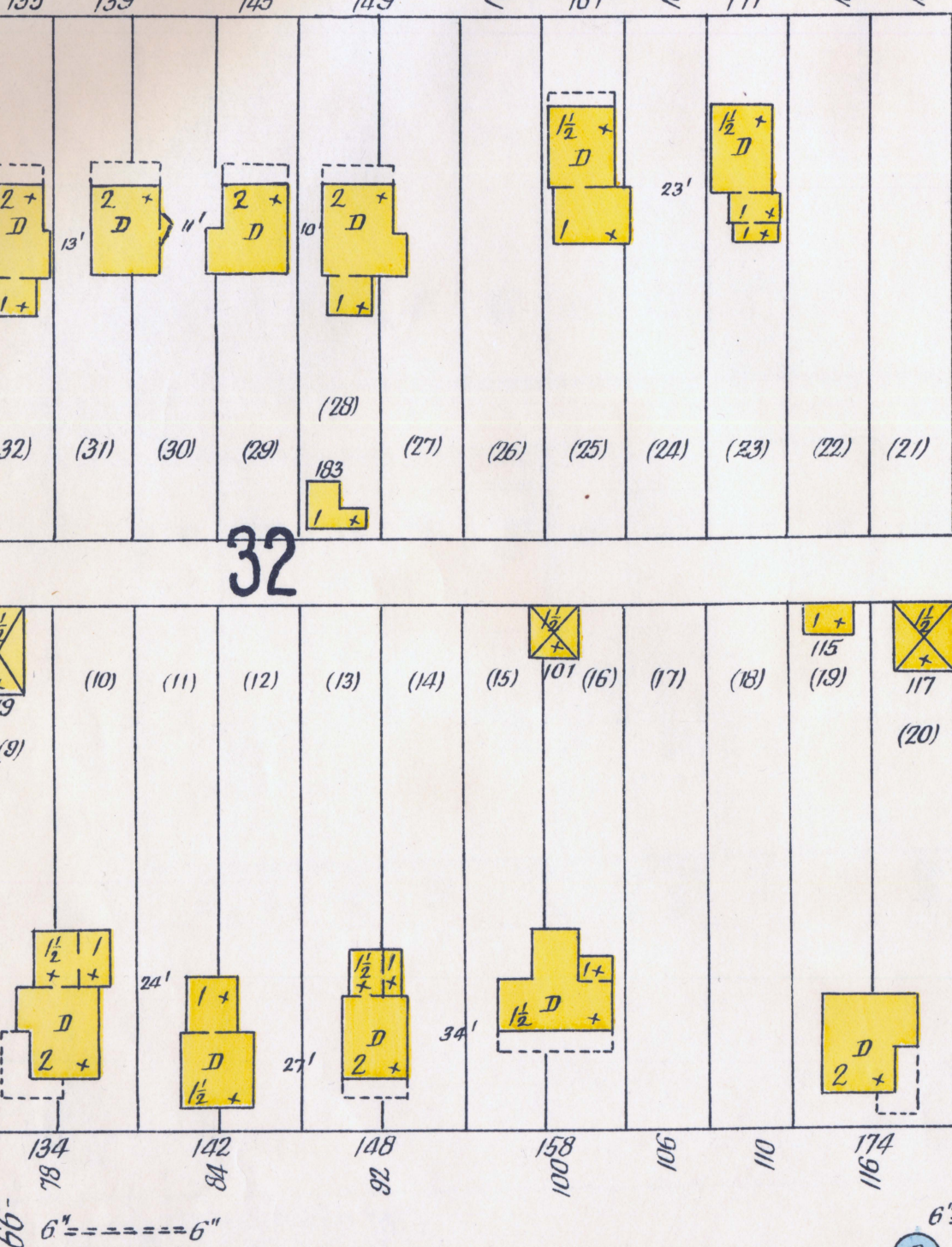
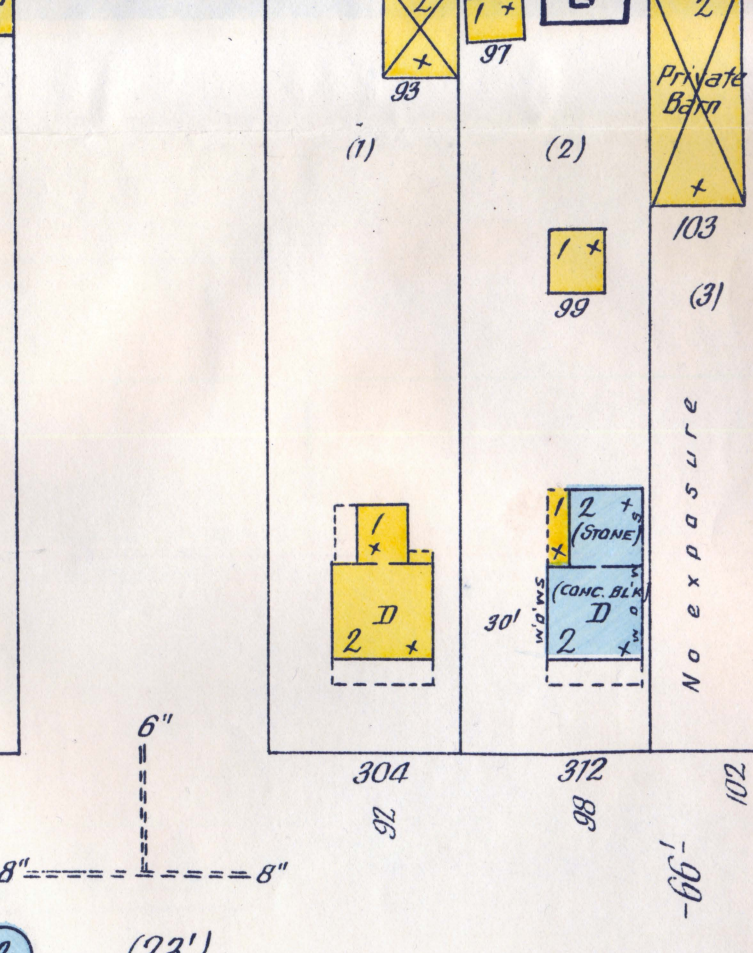
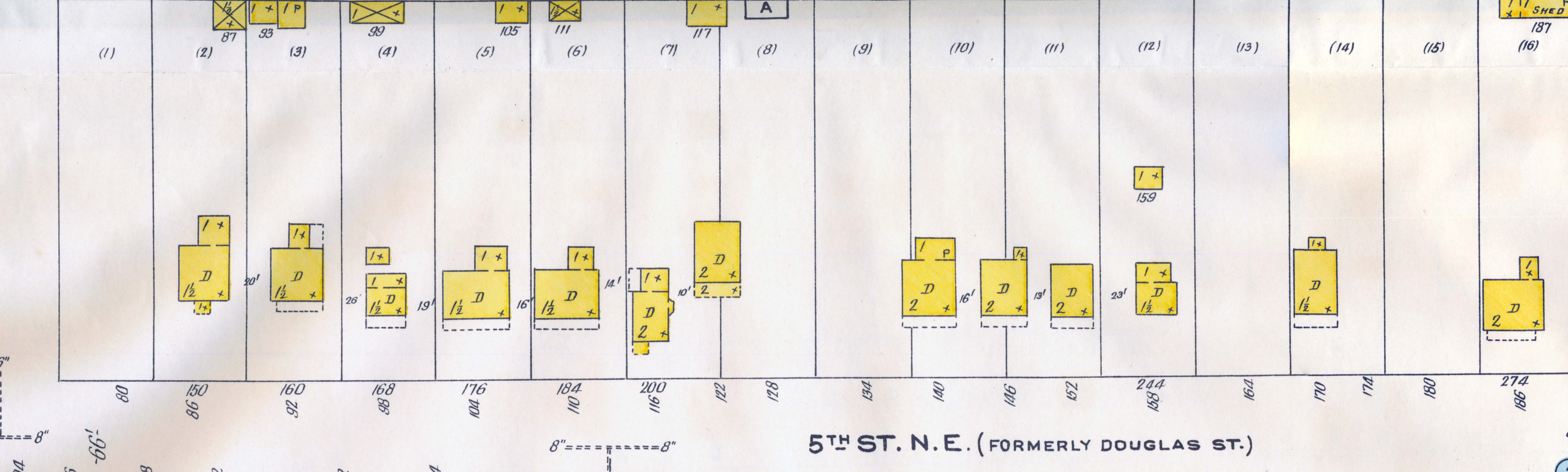
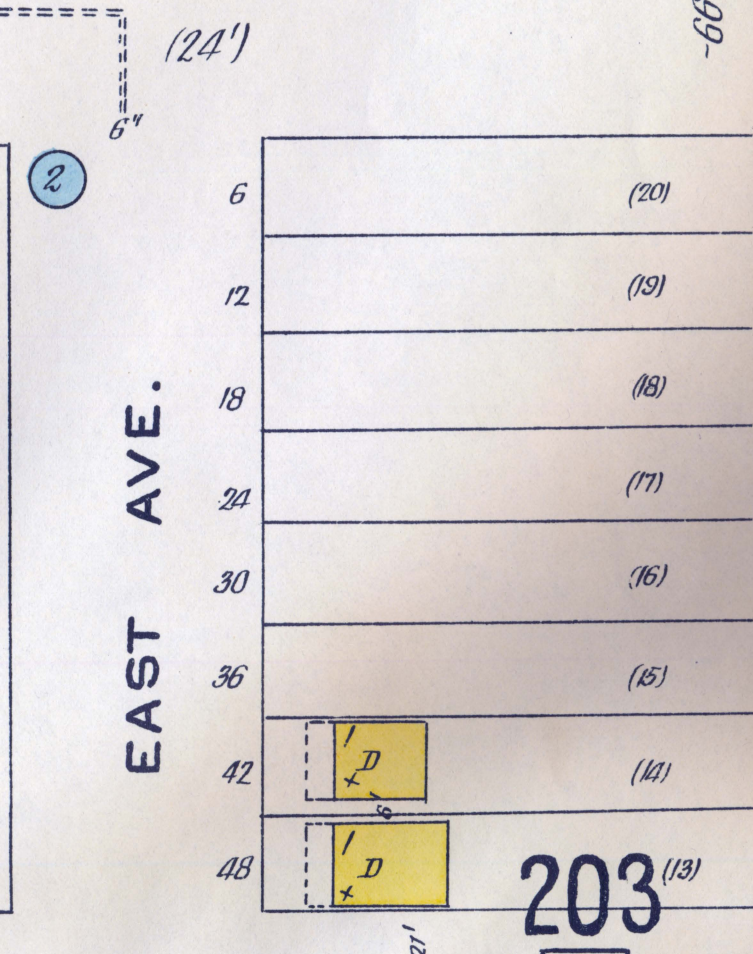
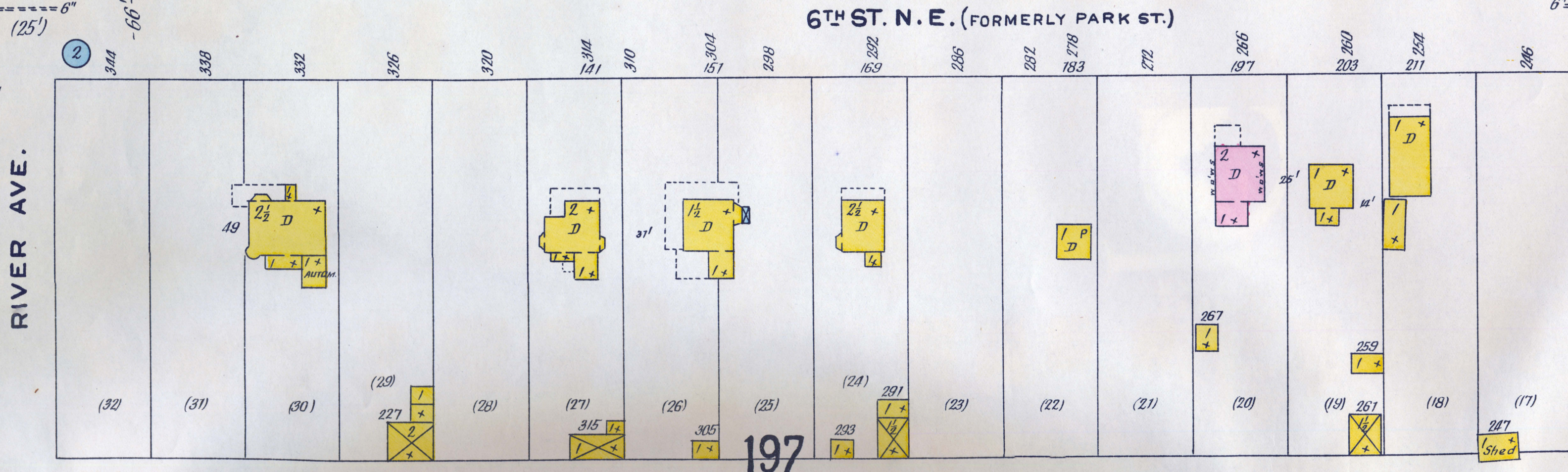
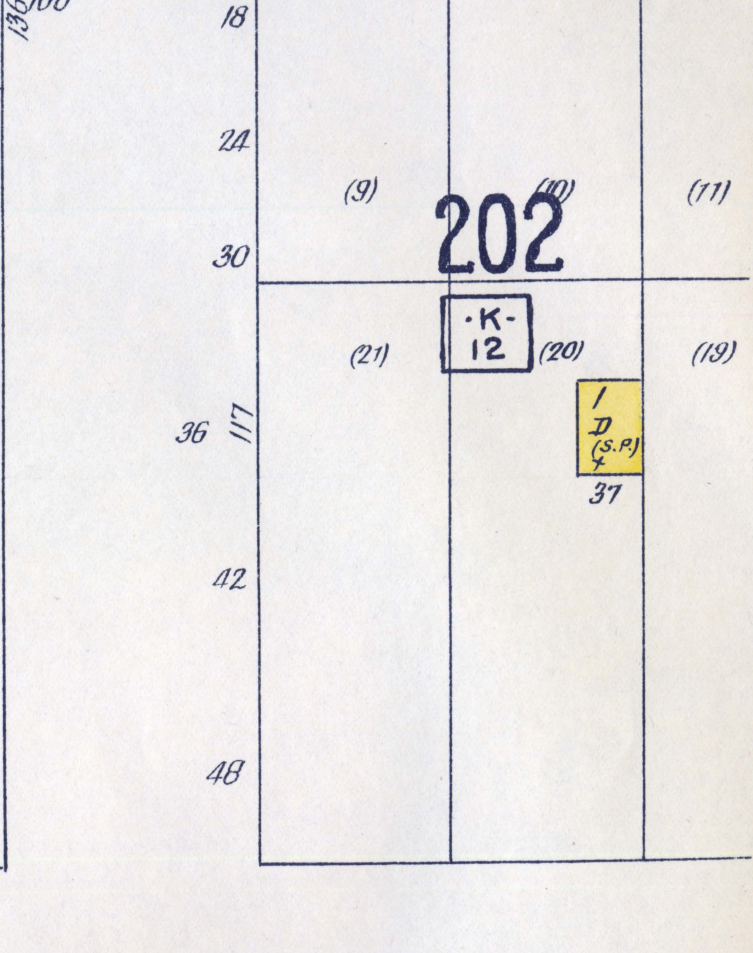
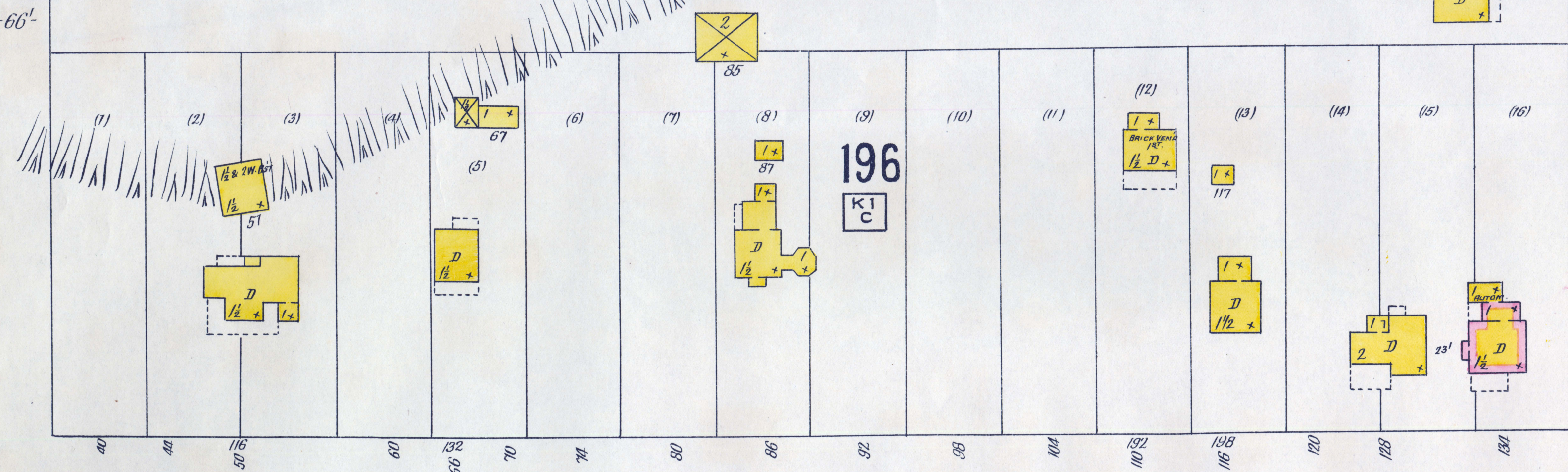
3RD ST. N.E. (FORMERLY STEWART ST.)

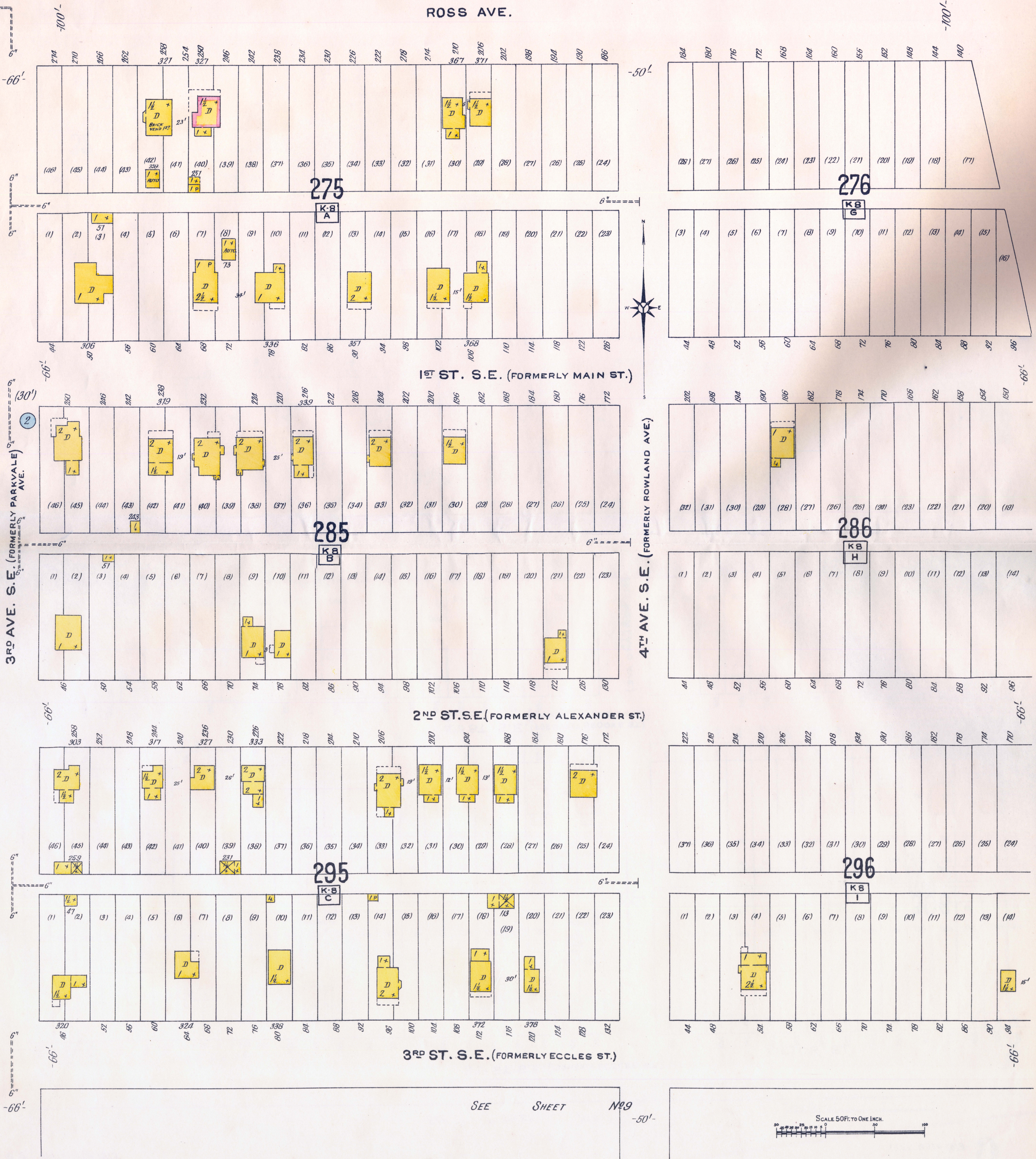
SEE SHEET

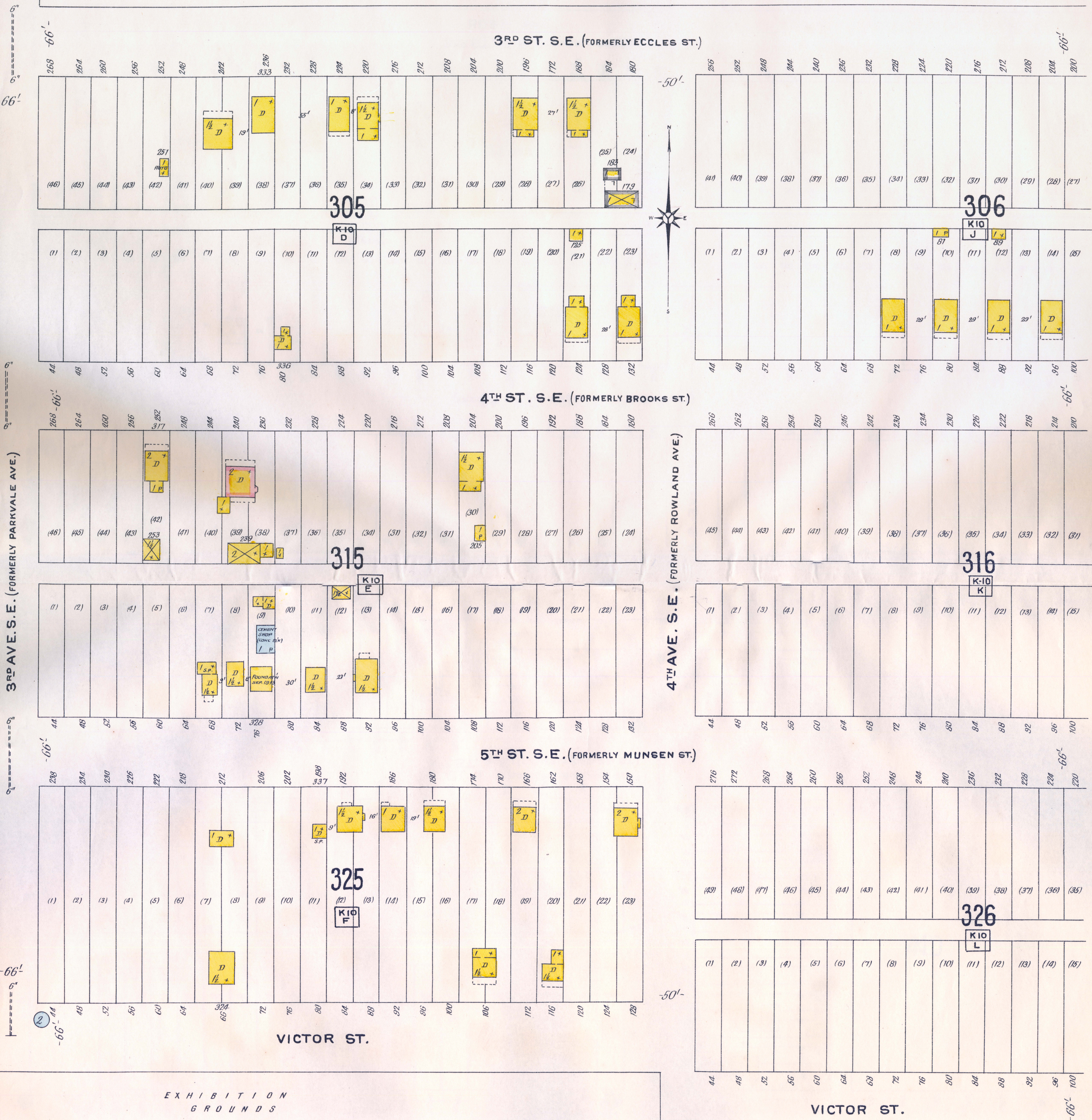


SEE SHEET No 4

SEE







SEE

SHEET

Nº3

2

Nº2

SHEET

SEE

1ST AVE. S.E. (FORMERLY MCKENZIE AVE.)

2ND ST. S.E. (FORMERLY ALEXANDER ST.)

3RD ST. S.E. (FORMERLY ECCLES ST.)

4TH ST. S.E. (FORMERLY BROOKS ST.)

5TH ST. S.E. (FORMERLY MUNSEN ST.)

359

HEAT: HOT AIR
FUEL: WOOD-
LIGHTS: ELECT.
2 C.B.
COTTAGE
SCHOOL
(Public)
No exposure

SCALE 50 FT. TO ONE INCH.

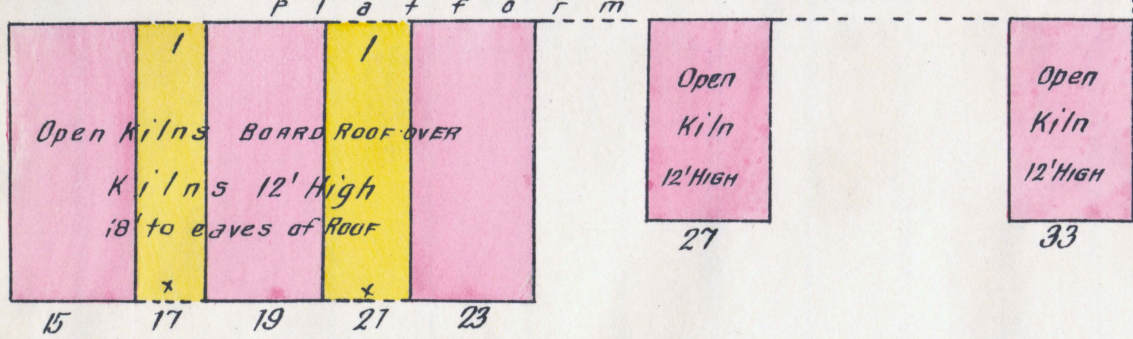
40

41

42



OFF. 9



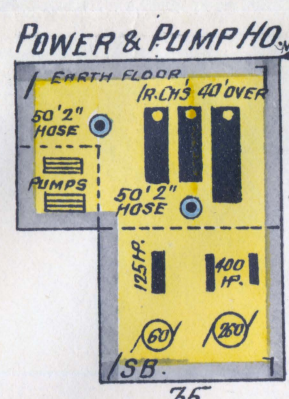
349

The CEMENT BUILDERS LTD
MFRS OF ORDINARY BRICK
FUEL: MOSTLY WOOD
In Liquidation - No Admission -
Sept. 1913

Cord Wood Piled

COAL WOOD PILES
250' HIGH

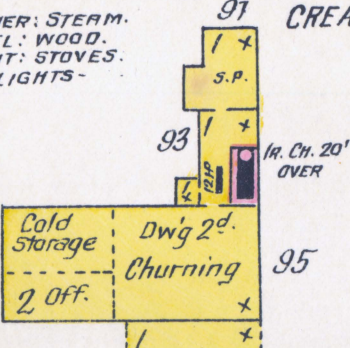
192



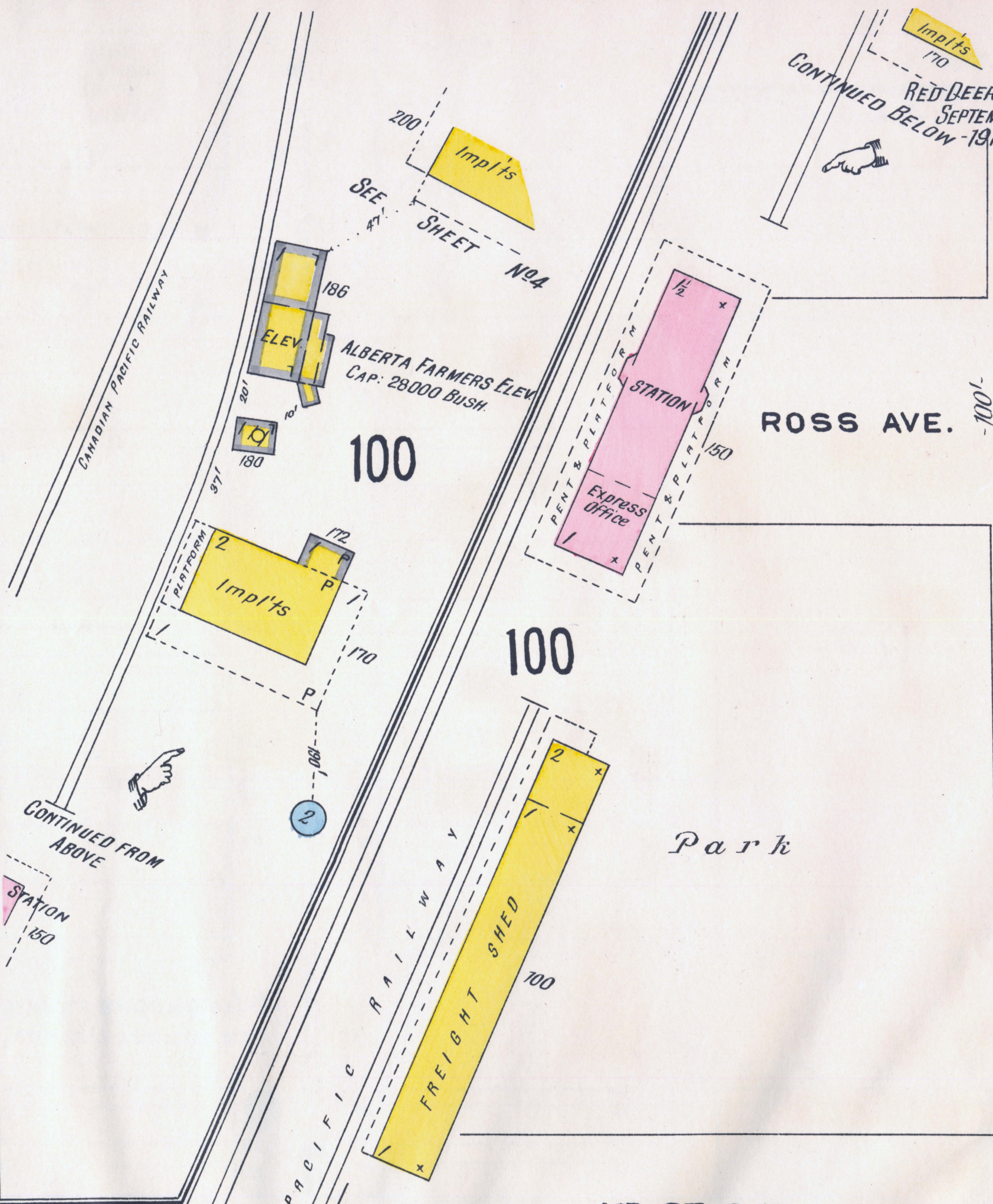
5TH ST. N.W. (FORMERLY DOUGLAS ST.)

193

RED DEER BUTTER and CHEESE MFG ASS'N
CREAMERY
POWER: STEAM.
FUEL: WOOD.
HEAT: STOVES.
NO LIGHTS



No exposures

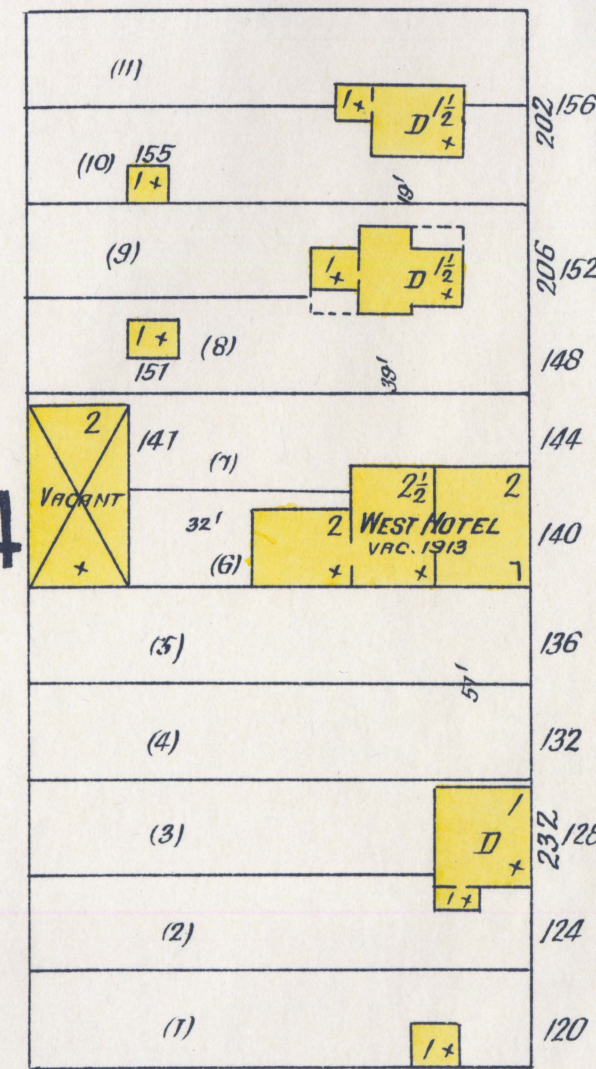
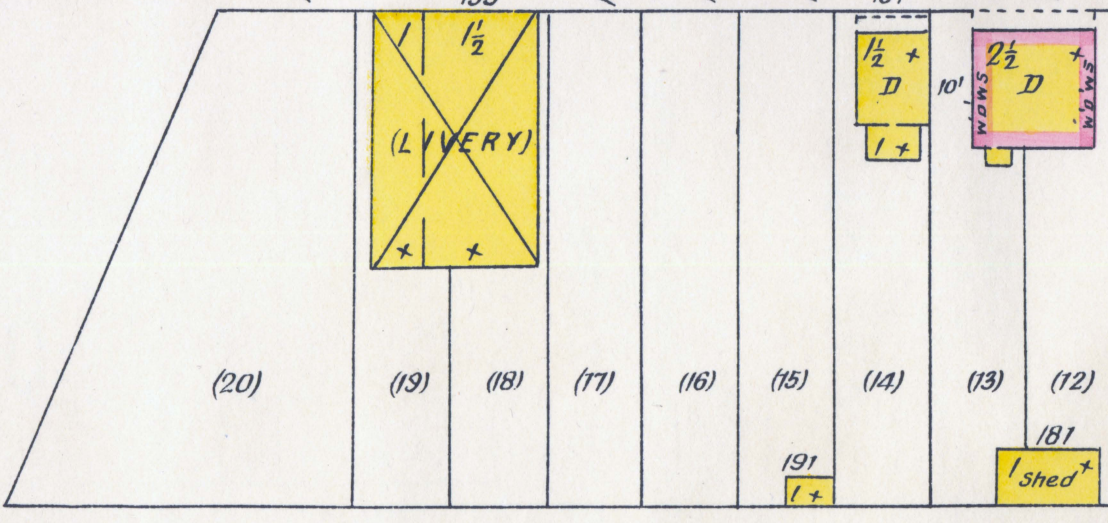
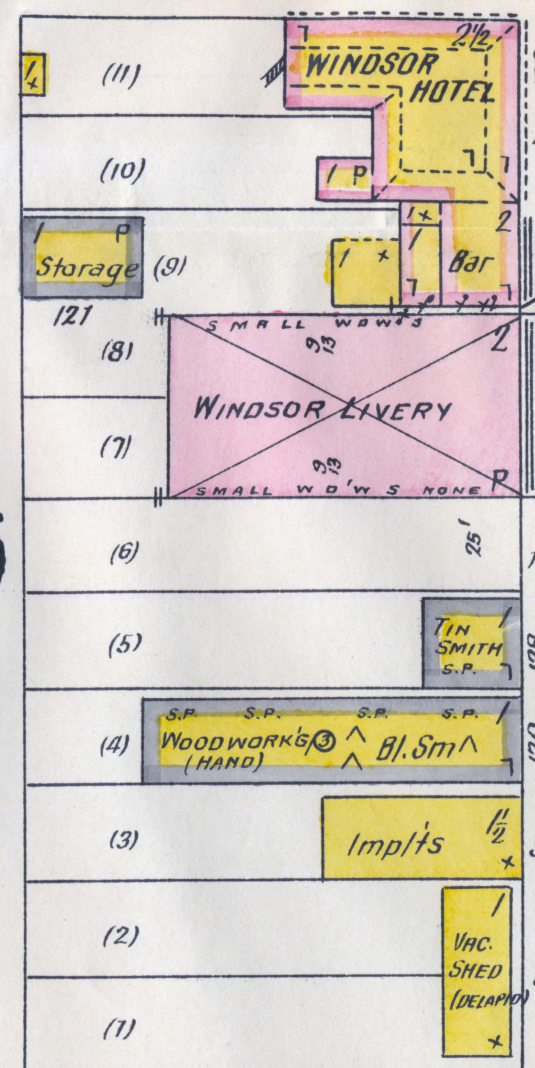


1ST ST. S.W.

KINGSMILL AVE.

2ND ST. S.W.

3RD ST. S.W.



SCALE 50 FT. TO ONE INCH.



SEE SHEET No 2

FIRST AVE. S.W.

SEE SHEET No 2

